

POWERING COMMUNITY TOGETHER

COMMUNITY BENEFIT REPORT 2017

Since 1975, Community First Foundation has been helping generous donors and innovative nonprofits come together to improve the quality of life and create positive change in Jefferson County, the Denver metropolitan area and beyond.

Building Community and Sharing Gratitude

Dear Friends,

Community requires a certain generosity of spirit. It calls on us to show up, be present and celebrate the best in each other.

Community is about working with families and children to address mental wellness as early in the formative years as possible. It is about inspiring the givers, supporting the do-ers and uniting the power of many to work together for the good of all. It is about honoring our heritage and developing a legacy for our families and for future generations.

Community is also about gratitude. When we take the time to reflect on what we are thankful for, our world becomes a little richer. And we are so thankful. Our nonprofit partners, community members, donors, volunteers and staff are the fabric of our community.

Join us as we reflect on 2017 and celebrate the generous community that makes our work possible.

Sincerely,



Marla J. Williams
President and CEO



Emily S. Robinson
Board Chair

- 2 INCREASING GENEROSITY
- 6 STRENGTHENING NONPROFITS
- 8 PROMOTING MENTAL WELLNESS
- 10 HONORING JEFFERSON COUNTY
- 12 LISTINGS
- 14 BOARD & STAFF
- 16 FINANCIALS

Community First Foundation increases generosity by inspiring the givers, supporting the do-ers and uniting the power of many to work together for the good of all. We power community together.

Donor-Advised Funds: A Strategic and Empowering Way to Give

A donor-advised fund (DAF) accommodates a strategic, engaged approach to charitable giving. It also simplifies philanthropy by organizing charitable giving through grants from one expertly managed fund. Community First Foundation's extensive relationships with local nonprofits and our knowledge of community needs mean we can help donors make a difference in ways that interest them the most. We manage more than 65 donor-advised funds, with nine new funds established in 2017. The minimum to establish a donor-advised fund at the Foundation is \$5,000.

One Man's Solution to Simplified Giving

Darl Hobson has been an active community member for decades. He has been a longtime volunteer and served on multiple boards of directors. He also supports nonprofits financially. However, Darl's preferred method of gifting—through appreciated stock—has become increasingly difficult. Few organizations have a mechanism to receive stock, he explained.

A donor-advised fund at Community First Foundation allows Darl to donate appreciated stock to the Foundation, which has the ability to sell it to fund his DAF. Darl receives a tax benefit in the year the stock is donated, but he can take his time to thoughtfully select 501(c)(3) recipients. In addition to naming the fund, Darl is the fund's advisor, making recommendations about whom he'd like to receive grants. The Foundation is responsible for fund management and due diligence, leaving the best part—giving—to Darl.

"A donor-advised fund has really simplified giving for me."

Darl Hobson,
*The Darl and Darlene
Hobson Fund*



"As advisors, we're introducing charitable giving possibilities to people who may not even know they exist."

Dan Morris, Community First Foundation Professional Advisors Council

Professional Advisors Council: Fostering Charitable Giving Through Financial Planning

In 2017 we launched the Foundation's Professional Advisors Council, an esteemed group of local attorneys, financial planners, CPAs and other professionals who advise clients about financial and estate planning. Our select group understands that charitable giving can be an integral and rewarding part of their clients' financial strategy.

Professional Advisors Council

John Lischer, Chair
Ryley Carlock & Applewhite

Kim Eilber
U.S. Trust

Craig Jones
The Colony Group

Julia McVey
Julia McVey, P.C.

Charlie Rhoades
Pinnacle Wealth Management

Vera Divenyi
BNY Mellon Wealth Management

Heidi Gassman
Wade Ash Woods Hill & Farley, P.C.

Jeff Kadavy
Trail Ridge Wealth Management

Dan Morris
High Point Financial Group, LLC

Leslie Schaus
Stratagem PC

Erin Hadary
Dunston Financial Group

Jason Lewis
Raymond James Financial

Andy Pahl
Merrill Lynch

Engaging your family in charitable giving helps promote shared values and a commitment to powering community together. A donor-advised fund is a great place to start.



INCREASING GENEROSITY

\$49 million was donated through ColoradoGives.org in 2017. Nearly \$13 million of the total was donated outside of Colorado Gives Day®.



Increasing Online Giving Year-Round

ColoradoGives.org was launched in 2007 to change the landscape of giving in Colorado. The community needed a reliable resource to learn about local nonprofits; nonprofits needed help leveraging emerging technology. Ten years later, usage of the site has steadily grown. To celebrate, we launched a new and improved website. We also took the opportunity to remind Coloradans that the site is open for giving 24/7—not just for Colorado Gives Day. As we move into 2018, we are even more focused on the message that nonprofits need support year-round, and ColoradoGives.org makes giving easy.

Cleo Parker Robinson Dance, Denver, Colorado
Photo credit: Jerry Metellus

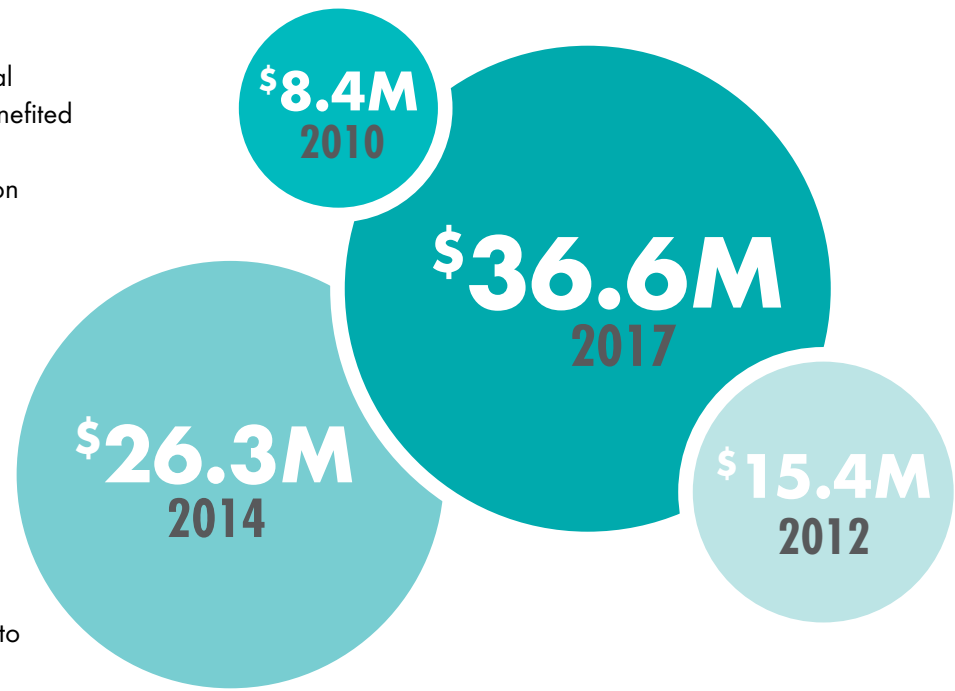


\$36.6 Million Raised on Colorado Gives Day®

Coloradans opened their hearts again and donated \$36.6 million to local nonprofits on Colorado Gives Day 2017. More than 2,300 nonprofits benefited from the 24-hour statewide movement. Community First Foundation and Corporate Partner FirstBank each contributed \$500,000 for the \$1 Million Incentive Fund, which boosted the value of every dollar donated.

Kids for ColoradoGives Campaign Increases Donations by 57%

In October 2017, the Foundation launched a Kids for ColoradoGives campaign to spark the joy of giving in young donors. For one month, nonprofits profiled on KidsforColoradoGives.org were entered into a prize drawing each time they received a donation. A fun quiz helped kids identify their favorite giving category and included hand-drawn illustrations to color. The campaign helped increase the number of donations through the site by 57 percent, and helped open the doorway to the next generation of donors.



eTown, Soccer Without Borders and Bessie's Hope are just a few of the organizations that benefit from online giving through ColoradoGives.org

STRENGTHENING NONPROFITS

Community First Foundation believes a strong nonprofit sector is fundamental to a community's strength. That's why strengthening nonprofits is one of our top strategic priorities. We offer a variety of programs and services to help nonprofits thrive, such as workforce development, expert endowment management, endowment-building grants, fundraising consultation, free meeting space and complimentary trainings led by industry experts.

Professional Development Strengthens the Nonprofit Workforce

Professionals working in the nonprofit sector have a new opportunity to gain valuable industry skills. Community First Foundation and Red Rocks Community College have partnered to offer Nonprofit Pathway—a certificate program taught by seasoned nonprofit professionals. The program teaches students the skills necessary to thrive in the nonprofit sector.

The program accommodates the needs of working professionals by offering accelerated classes, one at a time, in the evenings. Individuals can take just the classes they need or take all classes to earn a certificate. To make the program affordable for a diverse workforce, the Foundation offers scholarships that cover approximately 50 percent of tuition and fees.

Endowments: A Foundation for Growth

For more than a decade the Foundation's endowment-building programs have helped local nonprofits secure their ability to serve the community now and in the future. We currently manage more than 100 endowment funds ranging in size from \$25,000 to millions of dollars. In 2017 our Incentive Grant Program helped stimulate the endowment-building efforts of 23 Nonprofit Endowment Partner organizations through more than \$152,000 in incentive grants. We were also honored to welcome seven new organizations to our growing list of partners. For a full list, see page 12.

The Foundation's meeting space has become a sought-after space for nonprofit trainings, meetings and retreats. Designed for nonprofits and free of charge, it boasts a variety of rooms and configurations to foster collaboration.



Incentive Grant Recipients

The following are just a few of the 23 organizations that benefited from the 2017 Incentive Grant Program:

Enhancing Independence and Quality of Life

Many older adults wish to remain independent and in their own homes for as long as possible. **Seniors' Resource Center** helps make this a reality. Operating from five locations, they offer essential services such as transportation, in-home care, enrichment programs and chore support. An endowment at Community First Foundation helps ensure these services will be available to meet the future needs of this growing population.

Bringing Learning to Life

Pop Culture Classroom inspires a love of learning through comic books, graphic novels and other media. Through the tools of popular culture and the power of self-expression, their programs inspire creativity, increase literacy and bring learning to life for low-income students. They also present Denver Comic Con, an annual, three-day pop culture fan extravaganza. Their endowment fund sustains a lifetime love of learning by supporting a fun, play-based approach to education.



PROMOTING MENTAL WELLNESS

Community First Foundation invests in initiatives and programs that cultivate resilience and prevent the onset of mental illness. We've identified three key areas of opportunity: early childhood mental wellness, improving systems that support mental wellness and changing the perception of mental health and illness to achieve equal standing with physical health. Our approach to supporting work in these areas is informed by a public health perspective and we identified early childhood as the best opportunity for impact. Based on this model, most of our efforts focus on children and their families.

Proven Program Improves Early Childhood Development

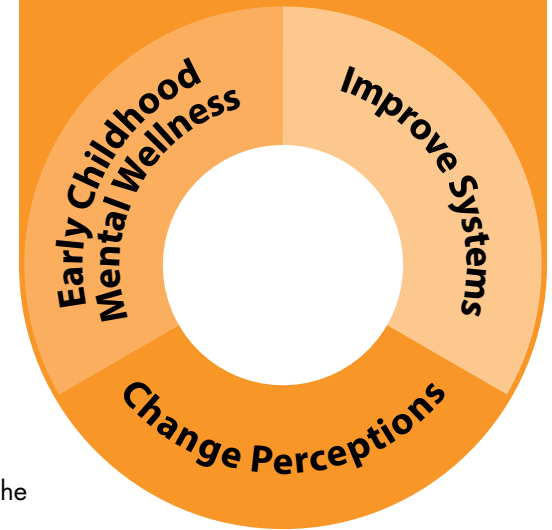
Community First Foundation is funding the expansion of a powerful, proven program. Called The Incredible Years, the program improves the emotional and social health of children between three and five years old. The program tackles the most influential forces in a child's early years: parents, teachers and the child's own behaviors. Parents learn positive parenting skills, teachers are trained in classroom behavior management and the children themselves learn how to regulate their emotions and succeed in school. The nonprofit Invest in Kids is leading the implementation of The Incredible Years at 61 sites in the Denver area.

\$1.47 Million to Support Home Visitation Programs

Home visitation programs give struggling parents the tools and support they need to raise emotionally healthy children. Yet the professionals who provide these services are often at risk for burnout and second-hand trauma. To strengthen their resiliency and minimize turnover, Community First Foundation is granting \$1.47 million for the workforce development of seven nonprofits providing home visitation services. The grants, delivered over a period of three years, address our focus area of improving systems for mental wellness, and ensure our community's families receive the best in evidence-based care.

For a list of grantees, visit CommunityReport.CommunityFirstFoundation.org

We've identified three focus areas to promote mental wellness.



The Innovators Society

In 2016, The Innovators Society's inaugural year, more than 500 community members were involved in a one-of-a-kind experience: community members helped select, coach and award \$650,000 to nonprofits with innovative ideas to improve mental wellness.

A year later, these nonprofits shared both quantitative and qualitative information about the progress of their innovations since receiving the grants. Each of the presenting innovators demonstrated a measurable impact on community mental wellness.

Community First Foundation's program continues with the launch of The Innovators Society 2.0. This round focuses on reducing the stigma associated with mental illness. Once again, six nonprofit innovators were selected to participate in an accelerator experience that includes initial funding, rigorous coaching, hands-on workshops and the chance to compete for grant dollars at a public pitch competition.

To learn more, visit CommunityFirstFoundation.org



HONORING JEFFERSON COUNTY

Community First Foundation has strong roots in Jefferson County as a result of our history with Lutheran Medical Center. To honor our heritage, we look for funding opportunities that build strong community in this county.

Securing Access to Substance Abuse Services on the West Side

When Arapahoe House, Jefferson County's only detox facility, announced they were closing their doors, Jefferson Center for Mental Health (JCMH) stepped in to fill the gap. With the help of a \$170,000 grant from Community First Foundation's Lutheran Legacy Fund, JCMH opened a new Withdrawal Management program and expanded services to include crisis walk-in services. In addition to detox, the withdrawal management program assists in increasing motivation for change so that ongoing recovery is possible.

\$1 Million to Improve Community Health

Community First Foundation distributed \$1 million in grants to 66 organizations addressing community health in Jefferson County. The Foundation used a holistic model of health that includes a wide range of contributing factors—such as social, emotional and economic health—as criteria for Improving Conditions of Community Health grants.

The grants address multiple focus areas: honoring our heritage in Jefferson County, strengthening nonprofits and promoting mental wellness. The following are just a few of the grant recipients. Visit CommunityFirstFoundation.org for a full list.

Helping Vulnerable Coloradans Stay Warm at Home

Energy Outreach Colorado is the only nonprofit in the state that raises millions of dollars to help low-income Coloradans heat their homes. In addition, they advocate for affordable energy policies and help affordable housing facilities reduce energy costs. Community First Foundation's grant helps fund the energy assistance they provide for Jefferson County residents.

Increasing Food Access and Community Resiliency

Sprout City Farms engages in urban agriculture to increase food access and community resiliency. "We believe in food as a connector of people, and build urban farms that serve as community hubs for connecting city dwellers of all ages and backgrounds to food, nature and each other," said Meg Caley, executive director. Their programs include shares in community supported agriculture, community farm education and multiple farm stands. The Foundation's grant helps support the operation of Mountair Park Community Farm located in Lakewood.

We use a holistic model of health that includes five contributing factors.



Empowering Teen Moms

Teen mothers typically have less than a one percent chance of ever earning a college degree. **Hope House of Colorado** is changing those odds. The Arvada-based nonprofit provides a variety of programs to help struggling teenage moms. The organization's residential program offers a safe, stable home for moms and their children who are without homes or living in unsafe environments. Parenting, college and career programs help the young mothers become self-sufficient and nurturing mothers.



Nonprofit Endowment Partners

We are proud to help nonprofit organizations build endowments for future needs through incentive grants, educational seminars, trainings and more. Dollars generated from these long-term funds can also provide a revenue stream for current needs. Thank you to the following organization that entrust us with stewarding endowment funds.

The Action Center
Adam's Camp
Adaptive Sports Association*
The Adoption Exchange
AllHealth Network
American Gelbvieh Foundation
Arvada Center for the Arts and Humanities
Audubon Society of Greater Denver
Aurora Mental Health Center
Blue Sky Bridge
Blue Spruce Habitat for Humanity
Boulder History Museum
Boulder Philharmonic Orchestra
Boys Hope Girls Hope of Colorado
Butterfly Pavilion
Carin' Clinic
CASA of Jefferson and Gilpin Counties
Castle Rock Senior Activity Center
Cat Care Society
Center for Health and Hope
The Center for Trauma & Resilience
The Center for Work Education and Employment (CWEE)
Clínica Tepeyac
Colorado Agricultural Leadership Foundation
Colorado Alliance for Environmental Education
Colorado Association of Funders*
Colorado Cancer Research Program
Colorado Children's Chorale
Colorado Homeless Families
Colorado Humanities
Colorado Neurological Institute
Colorado Nonprofit Association
Colorado Preservation
Colorado Public Television (CPT12, PBS)
Colorado VNA
Community College of Denver Foundation*
Community Cycles
The Conflict Center
Dental Aid

Denver Indian Family Resource Center
Denver Institute for Psychoanalysis
Denver Street School and StreetSchool Network
DenverWorks
Doctors Care
Dominican Home Health Agency
Eaton Senior Communities and Eaton Senior Communities Foundation
Economic Literacy Colorado
El Centro Su Teatro
Escuela de Guadalupe
Families First
Family Tree
Friends of Chamber Music**
Friends of Peak to Peak
Friends of the Haven
Girl Scouts of Colorado
The GLBT Community Center of Colorado
Glory Community
Goodwill Industries of Denver
Grand Beginnings*
The Greatest Generations Foundation
The Greenway Foundation
Griffith Centers for Children
ICAST
Jeffco Human Services Foundation*
Jeffco Schools Foundation
Jefferson Center for Mental Health
Jefferson County Library Foundation
Jewish Family Service of Colorado
JEWISHcolorado
Junior Achievement - Rocky Mountain
Lakewood Legacy Foundation
Latin American Educational Foundation
Littleton Symphony Orchestra
The Lowry Foundation*
Lutheran Family Services Rocky Mountains
Mackintosh Academy - Littleton
Metro Community Provider Network
Metro Denver Partners

Mountain Area Land Trust
NAMI Colorado
The National Society of The Colonial Dames of America in the State of Colorado
Open Media Foundation
OpenWorld Learning
Outdoor Lab Foundation
PetAid Colorado
Phamaly Theatre Company
Platte Valley Medical Center Foundation
Pop Culture Classroom
Project Angel Heart**
REDI Corporation
Rocky Mountain Children's Health Foundation
Rocky Mountain MS Center
Rotary Club of Wheat Ridge Foundation
SafeHouse Denver
Seniors' Resource Center
Sister Carmen Community Center
Spring Institute for Intercultural Learning*
Staenberg-Loup Jewish Community Center
Step Denver
SungateKids
Swallow Hill Music Association
Tennyson Center for Children at Colorado Christian Home
Tesoro Cultural Center
Westminster Public Schools Foundation
White Rose Scholarship Foundation**
The Wildlife Experience
WorldDenver*
YMCA of Metropolitan Denver, Susan M. Duncan Family Branch

* Welcome new 2017-2018 partners

** Designated Fund

In 2017 we managed endowment funds for 108 nonprofits and provided online giving services for more than 2,300.

Donor-Advised Funds

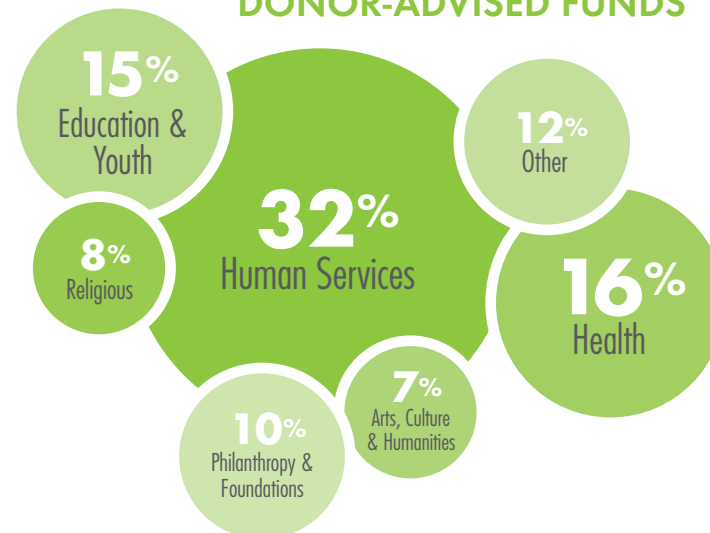
A donor-advised fund is a charitable giving vehicle that allows donors to support their favorite charities over time, yet receive immediate tax benefits. These types of funds appeal to those seeking a hands-on, strategic and convenient way to support nonprofit organizations. We are honored to steward these resources to support donors and address community needs.

Banko Family Fund
 Best Should Teach Fund
 David Bomberger Fund
 Brennan Family Fund
 Butterfield Family Donor-Advised Fund
 Sam Cheris Charitable Fund
 Valerie and Gilmour Clausen Fund
 Coburn Family Fund
 Collier Family Fund
 Aliyah and Milani Cook Fund*
 Felix and Margie Cook Fund
 Dahl Family Donor-Advised Fund
 Davis-Massey Family Fund
 Fred, Janet and Lucas Doyle Donor-Advised Fund
 Eicher Family Donor-Advised Fund
 Family & Children's Health Donor-Advised Fund*
 Janet Fania Memorial Scholarship Fund
 Franklin Fund
 Gardner Azari Family Fund*
 Griffith-McVey Family Fund
 Haggstrom Family Donor-Advised Fund
 Hanson Ernstrom Family Donor-Advised Fund
 Darl and Darlene Hobson Fund
 Jackson Family Donor-Advised Fund
 Jennings Human Capital Improvement Fund
 Joie de Vivre Fund*
 Kemp Family Fund
 Klau Family Foundation Fund
 Leach Family Donor-Advised Fund
 Marquez Family Fund

Jean and Ron Meyer Family Fund
 Molenaar Family Donor-Advised Fund
 Moreland Family Donor-Advised Fund
 Morrissey Family Fund
 Nu Sigma Nu Donor-Advised Fund
 Oliver Family Fund*
 Paul Family Fund
 Percy Family Fund
 Phelan Smith Family Fund
 Koger and Marcie Propst Family Donor-Advised Fund
 PBJ Reece Charitable Fund
 Reidy Family Donor-Advised Fund
 Barbara E. & Robert J. Reilly Charitable Fund*
 Ricketson Family Fund*
 Vernon and Sharon Ritzman Donor-Advised Fund
 Alan and Emily Robinson Donor-Advised Fund
 Shean Family Fund
 Keith and Alisha Stagg Fund
 Susan Stark Fund*
 Stevens Family Fund

Stevenson Fund
 Storatz Family Donor-Advised Fund
 Tarkanian Family Fund
 Penfield W. Tate III Foundation Fund*
 Tough Enough to Wear Pink Donor-Advised Fund
 Sharon L. & John U. Trefny Donor-Advised Fund
 Tuthill Family Fund
 Robert and Carla Urwiler Charitable Giving Fund
 Lynne Valencia Family Fund
 Vanderstoep Family Fund
 Raymond & Viola Wagner Family Fund
 Waring Family Fund
 Marla J. Williams Donor-Advised Fund
 Vickie Wilson Family Fund
 Winkler Family Foundation Fund*
 Womanist Empowerment Fund
 Woolsey Paustian Fund

AREAS OF GIVING FROM DONOR-ADVISED FUNDS



* Welcome new 2017-2018 donor-advised funds

2017 Board of Directors



Marla J. Williams
President and CEO



Emily S. Robinson
Board Chair
Chief Operating Officer
FirstBank



Peggy E. Jennings, CPA
Chair Emeritus
Audit Partner
Eide Bailly, LLP



David L. Bomberger
Chief Investment Officer
Pinnacol Assurance



Elycia R. Cook
Executive Director
FRIENDS FIRST



Janet Heck Doyle, Esq.
Retired CEO and President
Kramer Junction Company



Joy S. Johnson
Community Advocate



Russell W. Kemp, Esq.
Attorney
Ireland Stapleton



Shelley A. Marquez
Senior Vice President,
Community Development Manager
Wells Fargo



Christopher Davis-Massey, Esq.
Secretary
Chief Operating Officer
ChoLon Restaurant Concepts



Ronald C. Meyer, M.D.
Retired Community Pediatrician
Pediatrics West



Donovan J. (Jerry) Paul, CFA
Senior Vice President of Fixed Income
and Portfolio Manager
ICON Advisers



Hereford Percy
Treasurer
Retired President
FirstBank North



Cynthia Stevenson, Ph.D.
Instructor
School of Education & Human Development
University of Colorado – Denver



Penfield W. Tate III
Partner
Kutak Rock LLP



Robert Urwiler
Executive Vice President and
Chief Information Officer
Vail Resorts, Inc.



Lynne D. Valencia
Vice Chair
Director of Strategic Partnerships
Denver7/KMGH



Christine Woolsey
Senior Vice President
Chief Communications Officer and Marketing
SCL Health



Welcome 2018 Board Members



Aaron Azari
Executive Vice President
Colorado State Bank and Trust



Lydia Prado
Director of Community Partnerships
The Barton Institute for Philanthropy
and Social Enterprise



Gaye Woods
System Director Community Benefit
SCL Health

2017 Community Committee Members

Aaron Azari
Governance Committee
Executive Vice President
Colorado State Bank and Trust

Felix W. Cook, Sr.
Audit and Compliance Committee
Retired, Director of Technical Service Center
Bureau of Reclamation

William Ernstrom
Finance and Investment Committee
Founder
Voyant Technologies, Inc.

Lydia Prado
Community Impact Committee
Director of Community Partnerships
The Barton Institute for Philanthropy and Social Enterprise

Malcolm Tarkanian, M.D.
Governance Committee and Board Alumni Committee
Arvada Eye Associates

Jodi Thomas
Audit and Compliance Committee
President
FirstBank Arvada

John U. Trefny, Ph.D.
Philanthropic Services Committee and Board Alumni Committee
President Emeritus
Colorado School of Mines

Welcome 2018 Community Committee Members

Peggy E. Jennings, CPA
Audit Partner
Eide Bailly, LLP

Richard J. Klau
Community Impact Community
Chairman, Hajoqa Corporation

Brian Larson
Audit and Compliance Committee
Regional President Metro Denver
FirstBank

Lauren Larson
Community Impact Committee
Deputy Director for Operations
Office of the Lieutenant Governor

John Lischer
Philanthropic Services Committee
Ryley Carlock & Applewhite

2017 Staff Members

Marla J. Williams
President and CEO

Cheryl Haggstrom
Executive Vice President

Kenneth R. Kirwin
Chief Financial Officer

Noah M. Atencio
Vice President of Community Impact

Lynda Ricketson
Vice President of Philanthropic Services

Vickie M. Wilson, Ph.D.
Vice President of Philanthropic Services

Kayla Arnesen
Director of Strategic Communications

Samantha Barlow
Communications Coordinator

Nathaniel Beck
Receptionist and Administrative Assistant

Angela Bevacqua
Senior Communications Specialist

Valerie Brown
Meeting Space Administrator

Neelamai Chunlapak
Senior Accountant

Kelly Degering
Community Impact and Online Giving
Administrative Assistant

Veronica Farrell
Philanthropic Services Specialist

Jennifer Griffis
Program Associate

Lynn Homenick-Malloy
Executive Assistant

Sachi Ishida
Philanthropy and Communications Assistant

Lisa Lujan
Online Giving Coordinator

Christine Moreland
Controller

Paul Mulligan
Grants Administration Manager

Karen Newcomb
Finance Administrative Assistant and Accounting Clerk

Rebecca Olchawa Barker
Director of Philanthropic Services

Dana Rinderknecht
Director of Online Giving

Abigail Smith
Donor Support Specialist

Jenica Tomdale
Communications Coordinator

Tina Trela
Accountant

Bryce Wilkinson
Senior Online Giving Specialist

Welcome 2018 Staff Members

Raymael Blackwell
Program Associate

Beth McConkey
Director of Communications

Emily Nightingale
Philanthropy and Communications Assistant

2017 Financial Overview

Statement of Financial Position

As of December 31, 2017

ASSETS

Cash and Investments	\$ 406,268,340
Other Assets	4,850,041
Total Assets	411,118,381

LIABILITIES

Accounts Payable and Accrued Expenses	567,983
Grants Payable	5,190,147
Other Liabilities	74,792
Agency Funds	31,126,285
Total Liabilities	36,959,207

Net Assets

Total Liabilities and Net Assets	\$ 411,118,381
---	-----------------------

Statement of Activities

For the Year Ended December 31, 2017

REVENUE

Contributions	\$ 3,093,691
Other Income	1,630,080
Total Revenue	4,723,771

GRANTS AND EXPENSES

Grants	8,379,258
Other Program Expenses	3,485,928
Supporting Services	1,976,678
Total Grants and Expenses	13,841,864

CHANGE IN NET ASSETS FROM OPERATIONS

Net Return on Investments	46,645,118
---------------------------	------------

CHANGE IN NET ASSETS

Net Assets, Beginning of Year	336,632,149
Net Assets, End of Year	\$ 374,159,174

For detailed financial reports, visit Communityreport.CommunityFirstFoundation.org

**\$411.1
Million**

Total Assets

200+

Number of
Funds Managed



**Increasing generosity and
powering community for positive change.**

